

**ABBREVIATIONS**

- RO = ROUGH OPENING
- RD = REFERENCE DIMENSION
- FW = FRAME WIDTH
- FH = FRAME HEIGHT
- OD = OPENING DIMENSIONS
- WP = WORK POINT
- ARD = ARCHITECTURAL REF. DIM.
- FD = FRAME DIMENSIONS
- DLO = DAY LITE OPENING
- DO = DOOR OPENING
- TBD = TO BE DETERMINED
- COC = CONCEALED OVERHEAD CLOSER
- NBTSI = NOT BY TSI/EWS

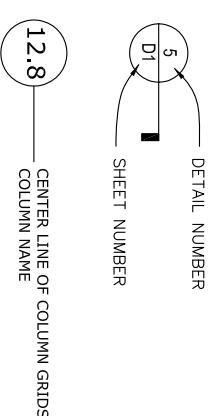
**MATERIAL SYMBOLS**

- = EARTH
- = GRAVEL
- = CONCRETE
- = CONCRETE MASONRY UNITS
- = COMMON BRICK OR CONC. MASONRY VENEER
- = METAL - FERROUS (STEEL)
- = METAL - ALUMINUM
- = FINISH LUMBER
- = WOOD ROUGH - (CONTINUOUS)
- = WOOD ROUGH - (SPACED)
- = BATT INSULATION
- = SAND/MORTAR/GROUT GYPSUM BOARD/STUCCO
- = EIFS / RIGID INSULATION

**SYMBOLS**

- = (DATUM)
- = HORIZONTAL WORK POINTS
- = VERTICAL WORK POINTS
- = DOOR NUMBER
- = CENTER LINE
- = ANCHOR LOCATION
- = GLASS TYPE
- = REVISION
- = SEALANT & BACKER ROD
- = SEALANT & BACKER ROD (PERIMETER CAULKING)
- = SEALANT & BACKER ROD BY OTHERS

ELEV. OR DETAIL NUMBER  
ARCHITECT DETAIL NUMBER  
DESCRIPTION  
SYSTEM REQUIRED/NOTES  
ARCHITECT SHEET NUMBER  
DETAIL NUMBER  
SHEET NUMBER  
CENTER LINE OF COLUMN GRIDS



**CONTRACT NOTES**

THESE DRAWINGS REFLECT TSI/Exterior Wall Systems, Inc. INTERPRETATION OF THE ARCHITECTURAL PLANS AND SPECIFICATIONS AS THEY RELATE TO OUR WORK.

ALL MATERIALS WILL BE RELEASED PER OPENING AND REFERENCE DIMENSIONS SHOWN HERE IN ONCE DRAWINGS ARE RETURNED APPROVED OR APPROVED AS NOTED. TSI/Exterior Wall Systems, Inc. EXCLUDES FIELD VERIFICATION OF OPENING AND REFERENCE DIMENSIONS. THE GENERAL CONTRACTOR MUST ASSUME RESPONSIBILITY FOR DISCREPANCIES IN REFERENCE AND OPENING DIMENSIONS WHICH RESULT IN THE NEED TO REORDER OR REFABRICATE MATERIALS. ANY CHANGES AFTER APPROVAL WILL REQUIRE RE-ENGINEERING AND MAY AFFECT DELIVERY AND MAY INVOLVE A PRICE ADJUSTMENT.

RETURNED DRAWINGS APPROVED OR APPROVED AS NOTED CONSTITUTES THE GENERAL CONTRACTORS GUARANTEE OF THE DIMENSIONS AND CONDITIONS SHOWN HERE IN AND THE COORDINATION OF THIS INFORMATION WITH OTHER TRADES.

ACID RUNOFF FROM MASONRY AND CONCRETE, ALONG WITH MANY WASH DOWN SOLUTIONS WILL PERMANENTLY DAMAGE ALUMINUM FINISHED AND GLASS. TSI/Exterior Wall Systems, Inc. WILL ASSUME NO RESPONSIBILITY FROM DAMAGE CAUSED BY OTHERS AND EXCLUDES PROTECTION OF MATERIALS AND FINAL CLEANING.

**RECOMMENDATIONS:** THE AMERICAN ASSOCIATION CARE OF ALUMINUM (A.A.M.A PUBLICATION 92) FOR THE MAINTENANCE OF THE ALUMINUM.

ALL WOOD BLOCKING SHOWN IS NOT BY TSI/Exterior Wall Systems, Inc.

**NOTE:** IN ORDER FOR OUR WINDOW SYSTEMS TO WORK PROPERLY ALL OPENING SIZES MUST BE HELD WITHIN ± 1/4" OPENINGS SMALLER BY MORE THAN 1/4" COULD PRODUCE A NON-WARRANTABLE SEALANT JOINT.

TSI/Exterior Wall Systems, Inc. WILL ASSUME NO RESPONSIBILITY FOR ERRORS RESULTING FROM THE USE OF THESE DRAWINGS BY OTHER TRADES.

IT IS THE RESPONSIBILITY OF THE GENERAL CONTRACTOR, ARCHITECT, AND ENGINEER TO ENSURE THAT ALL THE SURROUNDING CONDITIONS THAT OUR WINDOWS MEET ARE SUFFICIENT TO SUPPORT THE LOADS OUR WINDOWS IMPOSE ON THEM.  
**EXAMPLES:** FILLING HOLLOW BLOCK WHERE ATTACHMENT IS REQUIRED, HEAVY GAUGE STUDS, ETC.

**DESIGN CRITERIA:**

INTERNATIONAL IRON WORKERS  
APPRENTICE COMPETITION

SYSTEMS/FINISH DESCRIPTION

SYSTEM: KAWNEER 1600 SYS I. 7.5" DEEP,  
2.5" FACE  
FINISH: CLEAR ANODIZED

GLASS SCHEDULE

DESCRIPTION

MAKE-UP

1	1" INSULATED GLASS	1/4" HS CLEAR
		1/2" AIR SPACE
		1/2" HS CLEAR.

**DRAWINGS SHEET INDEX**

NO.	DESCRIPTION
	COVER SHEET
SHEET #1	ELEVATION
SHEET #2	DETAILS
SHEET #3	ISOMETRIC
SHEET #4	TAG DRAWING

**SUBMITTAL RECORD**

REV.	DATE	DESCRIPTION

STAMP AREA

TSI EXTERIOR WALLS, INC  
CURSORY REVIEW  
DATE 3-2-10 BY Jim Dittrich

**TSI**

TITLE APPRENTICE COMPETITION  
TSI EXTERIOR WALLS INC.  
3705 WEST STREET, LANDOVER, MARYLAND 20785  
PHONE 301-322-7200 FAX 301-322-7207  
CONTRACTORS & FABRICATORS

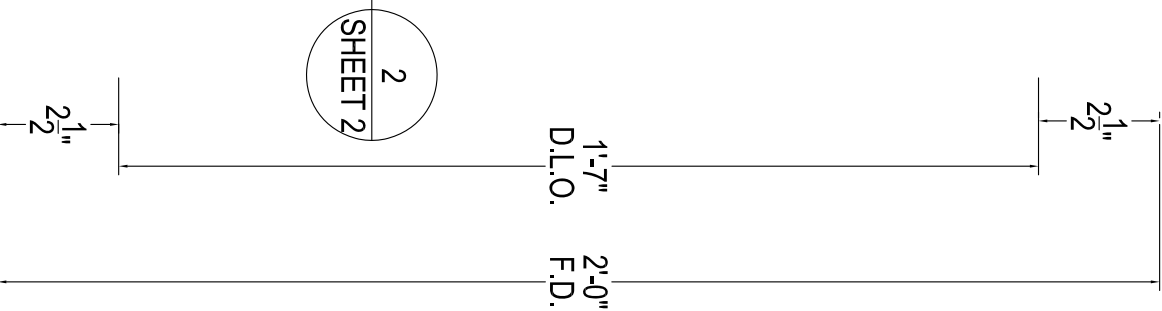
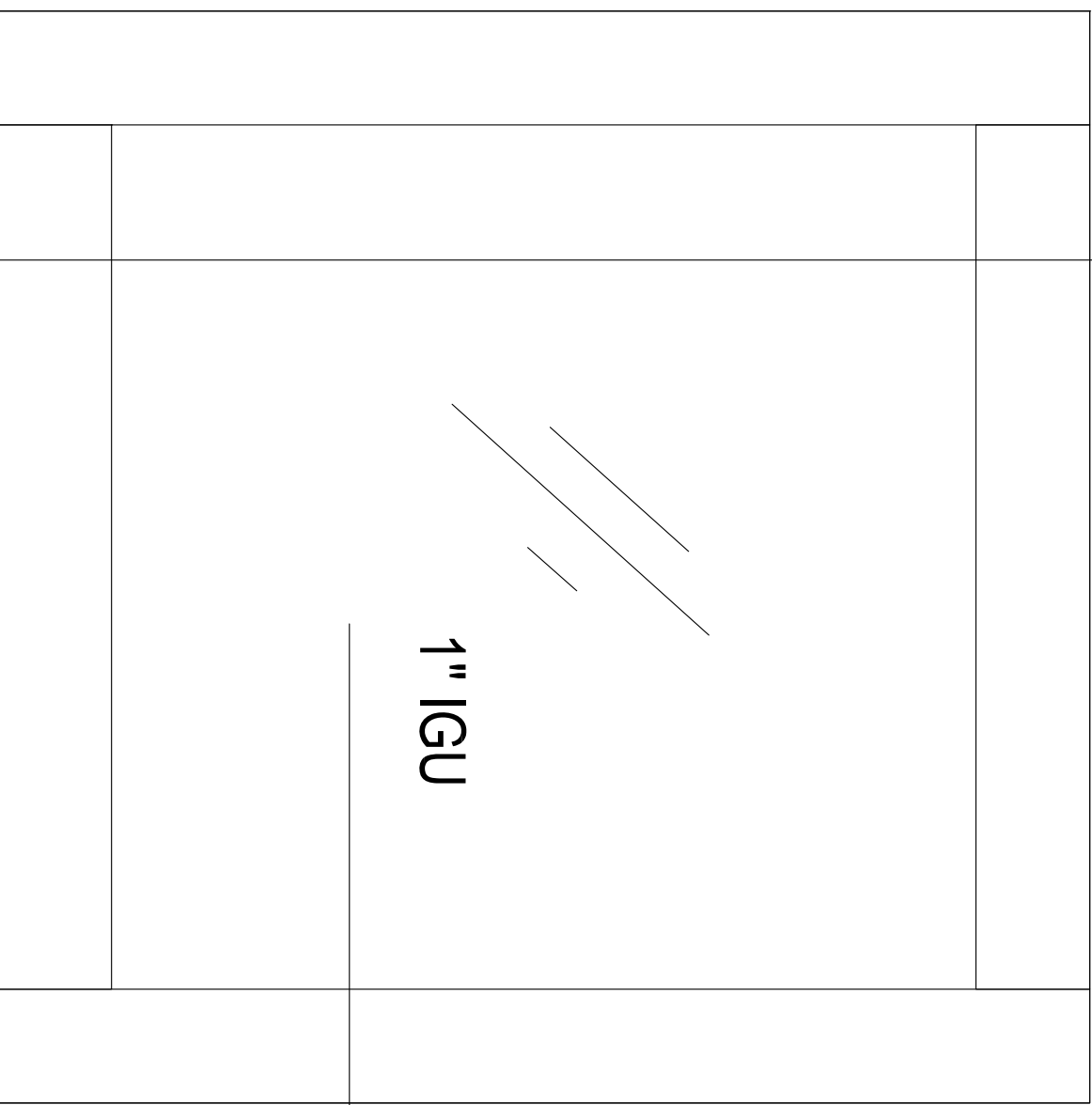
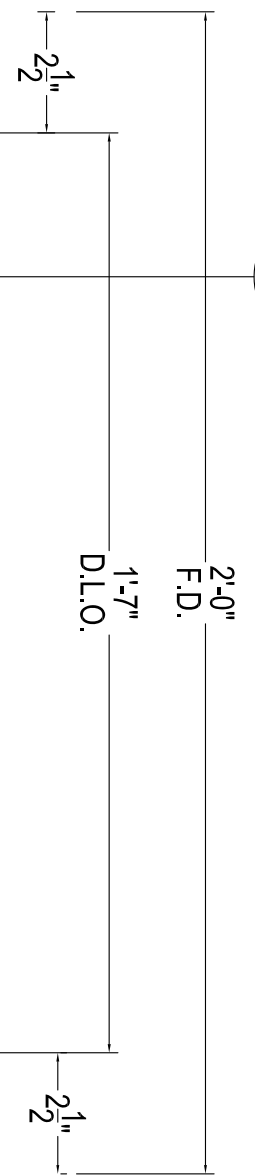
REVISIONS  
REMARKS

DATE  
BY

PROJECT INTERNATIONAL IRON WORKERS APPRENTICE COMPETITION  
LOCATION  
ARCHITECT  
GENERAL CONTRACTOR

DRAWN BY DATE J DITTRICH 3-2-10  
DRAWING NUMBER  
COVER

1  
SHEET 2



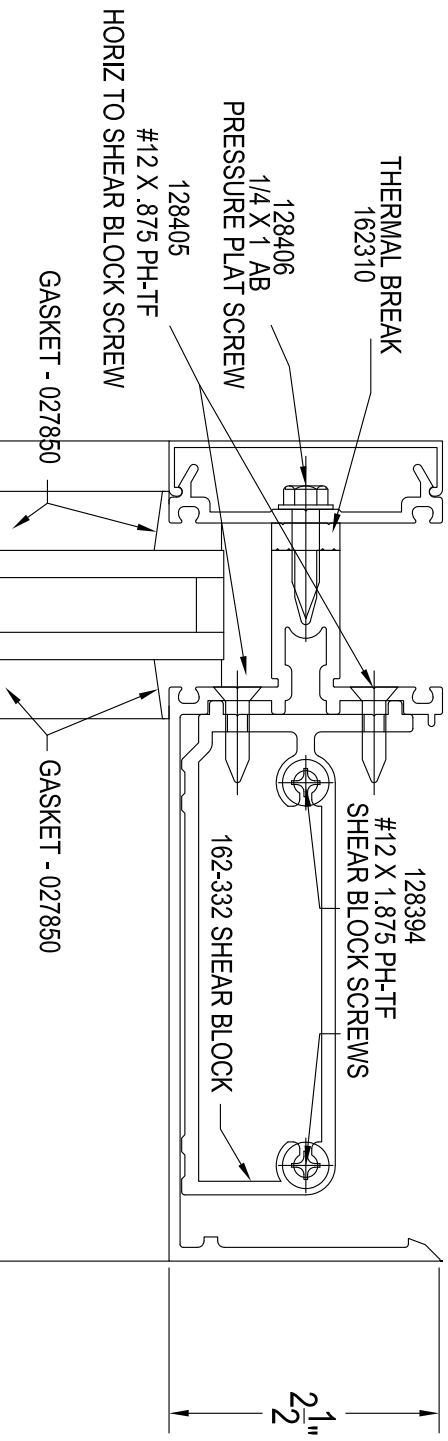
WINDOW ELEVATION


SCALE - HALF SIZE

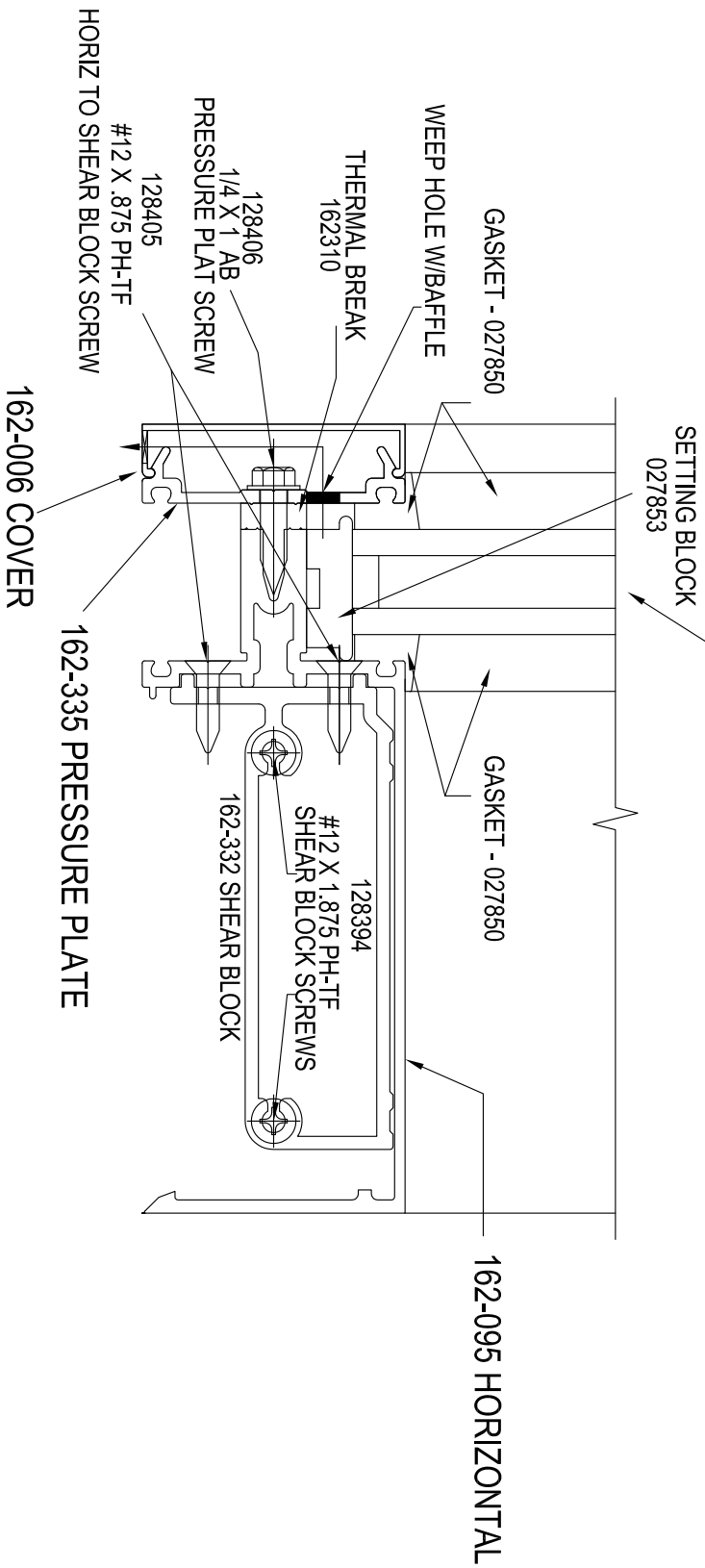
PROJECT		APPRENTICESHIP COMPETION		REVISIONS		TITLE	
LOCATION	DATE	BY	REMARKS	CURTAINWALL WINDOWS AND DOOR			
ARCHITECT				TSI EXTERIOR WALLS INC.			
GENERAL CONTRACTOR				3705 WEST STREET, LANDOVER, MARYLAND 20785			
				PHONE 301-322-7200 FAX 301-322-7207			
				CONTRACTORS & FABRICATORS			
DRAWN BY		DATE		ELEVATIONS			
J.DITTRICH		X-XX-XX		DRAWING NUMBER			
				1			

## 162-335 PRESSURE PLATE

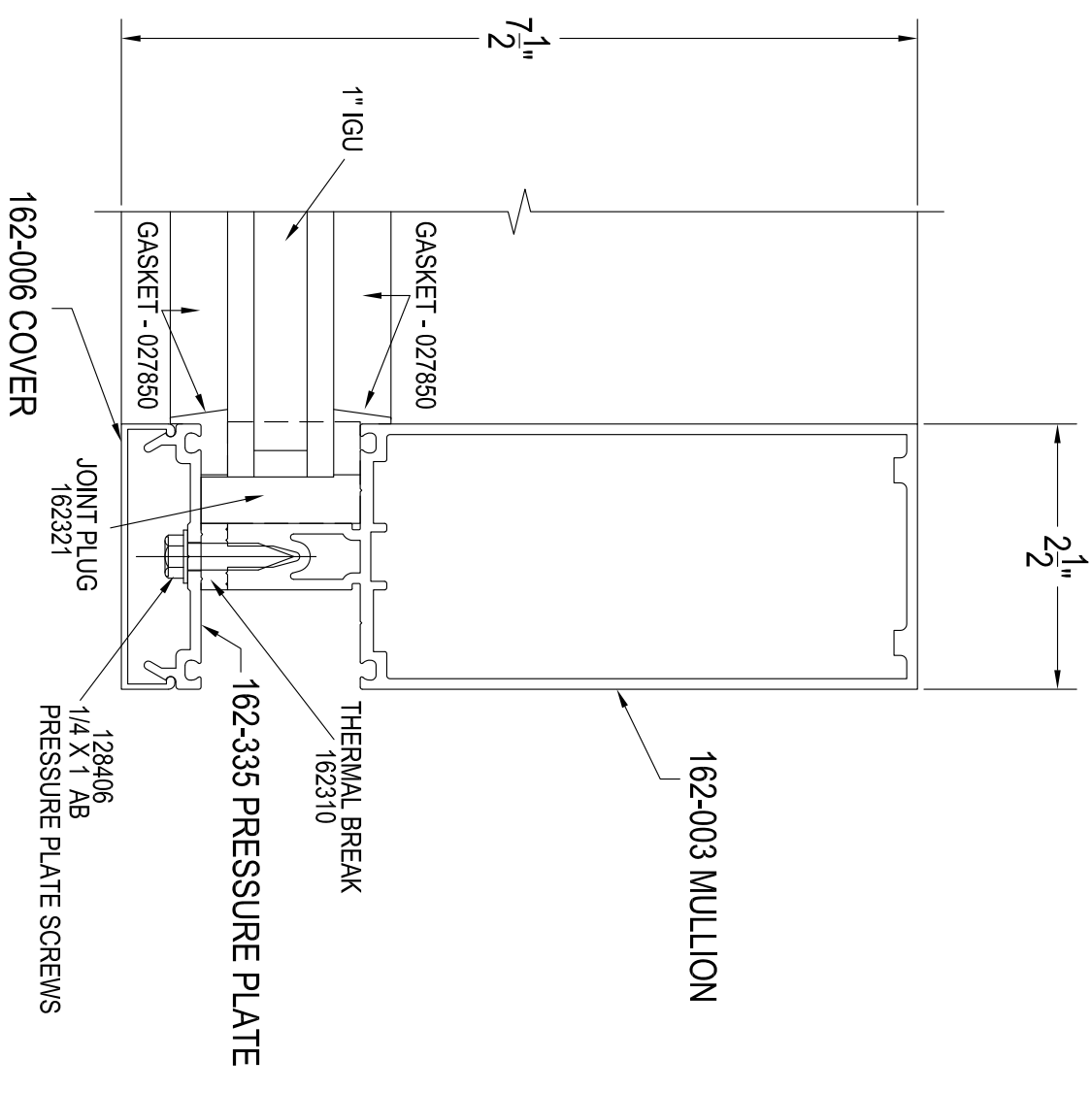
### 162-006 COVER



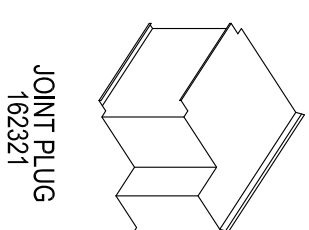
### 162-095 HORIZONTAL



### 162-095 HORIZONTAL



### 162-003 MULLION



JOINT PLUG  
162321

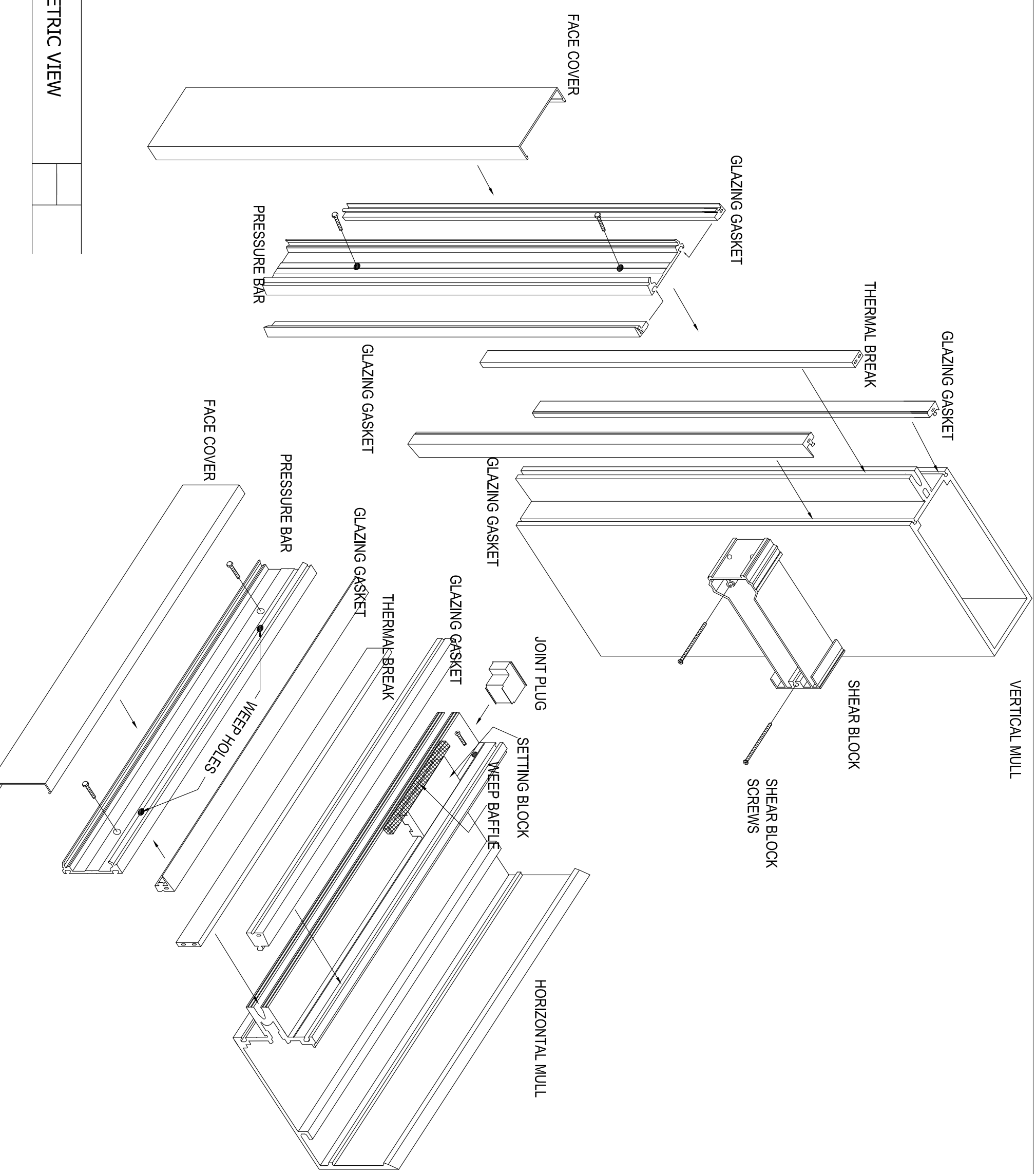
### FRAMING PARTS

1
---

### FRAMING PARTS

2
---

PROJECT		APPRENTICESHIP COMPETITION		BY		DATE		REVISIONS		REMARKS		TITLE		CURTAINWALL WINDOWS AND DOOR	
LOCATION		XXXXXXXX										TSI EXTERIOR WALLS INC.		3705 WEST STREET, LANDOVER, MARYLAND 20785	
ARCHITECT		XXXXXXXX										CONTRACTORS & FABRICATORS		PHONE 301-322-7200 FAX 301-322-7207	
GENERAL CONTRACTOR		XXXXXXXX													
DRAWN BY		J.DITTRICH		DATE		X-XX-XX		PARTS		DRAWING NUMBER		2			



ISOMETRIC VIEW

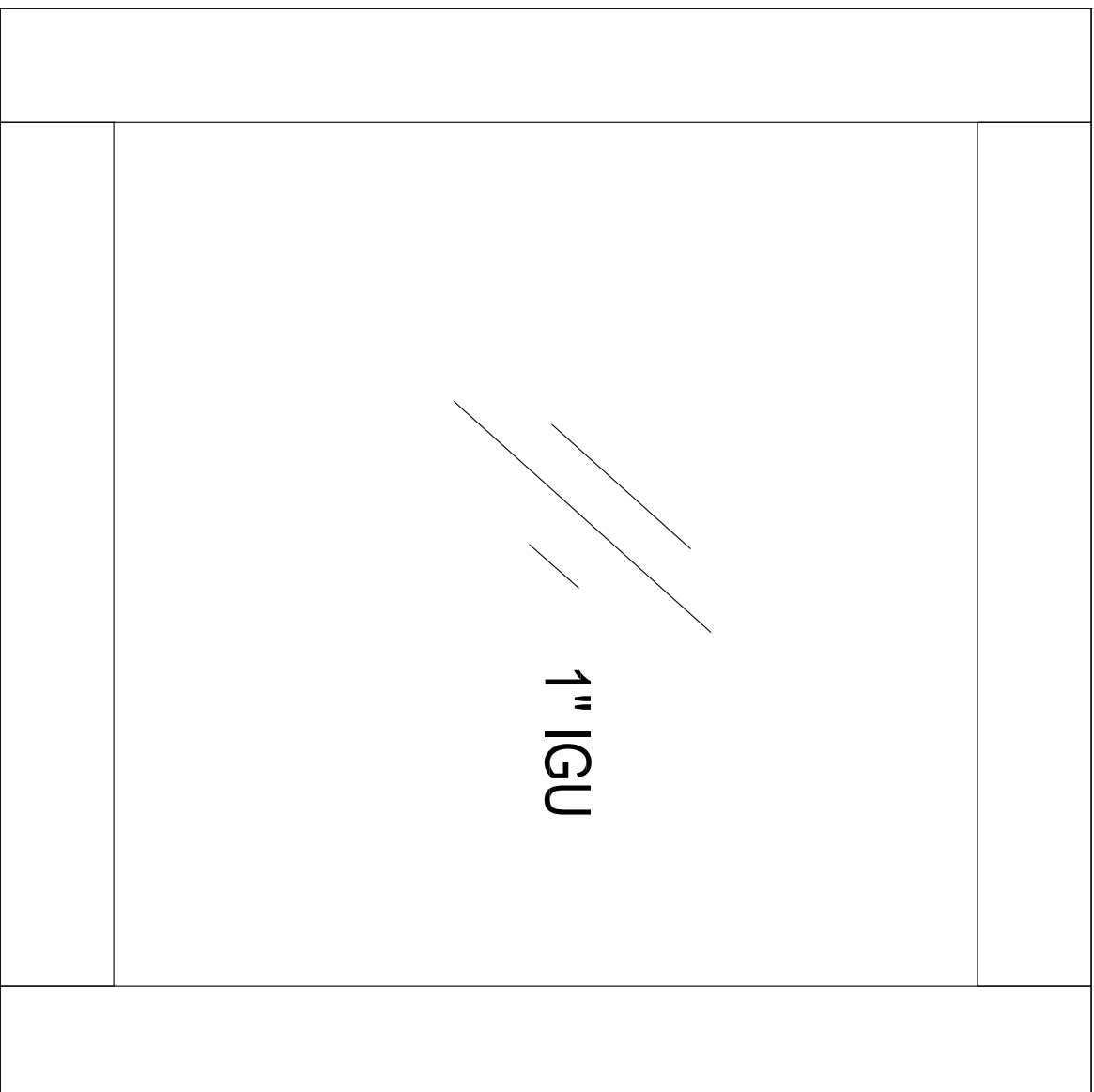
PROJECT		APPRENTICESHIP COMPETITION		REVISIONS		TITLE	
LOCATION		XXXXXXXX		REMARKS		CURTAINWALL WINDOWS AND DOOR	
ARCHITECT		XXXXXXXX		BY	DATE	TSI EXTERIOR WALLS INC.	
GENERAL CONTRACTOR		XXXXXXXX				3705 WEST STREET, LANDOVER, MARYLAND 20785	
						PHONE 301-322-7200 FAX 301-322-7207	
						CONTRACTORS & FABRICATORS	
PARTS							
DRAWING NUMBER							
3							

# TAG DRAWING

H-1

PP-2

FC-2



1" IGU

V-1

PP-1

FC-1

V-1

PP-1

FC-1

S-1

PP-3

FC-2

V-1: VERTICAL MULLION  
 PP-1: VERTICAL PRESSURE PLATE  
 FC-1: VERTICAL FACE COVER

H-1: HORIZ MULLION  
 PP-2: HORIZ PRESSURE PLATE  
 FC-2: HORIZ FACE COVER  
 FILLER-1: FLAT FILLER PLATE

S-1: SILL MULLION  
 PP-3: SILL PRESSURE PLATE  
 FC-2: HORIZ FACE COVER  
 FILLER-1: FLAT FILLER PLATE

# TSI

TITLE CURTAINWALL WINDOWS AND DOOR  
 TSI EXTERIOR WALLS INC.  
 3705 WEST STREET, LANDOVER, MARYLAND 20785  
 PHONE 301-322-7200 FAX 301-322-7207  
 CONTRACTORS & FABRICATORS

REVISIONS	REMARKS	DATE	BY

PROJECT	APPRENTICESHIP COMPETION
LOCATION	XXXXXXXX
ARCHITECT	XXXXXXXX
GENERAL CONTRACTOR	XXXXXXXX

DRAWN BY	DATE
J.DITTRICH	X-XX-XX

TAG DRAWINGS  
 DRAWING NUMBER

4

SCALE - HALF SIZE